



## Thermostat Instruction

Easy touch Easy warm



**APP**  
for ET-6AW

Table of  
**Contents**

01	Introduction.....	01
02	Technical Specifications.....	01
03	Installation.....	01
04	Wiring Instruction.....	02
05	Thermostat Symbols.....	03
06	Startup Wizard.....	04
07	WiFi Connection.....	05
08	Function and Operation.....	07
	8.1 Temporary Override Temperature.....	07
	8.2 Mode.....	07
	8.3 Key-Lock.....	07
	8.4 Menu.....	08
	8.4.1 Clock.....	09
	8.4.2 Event Setting.....	09
	8.4.3 Readout.....	10
	8.4.4 Advanced Setting.....	10
	8.5 Open Window detection.....	12
09	Troubleshooting.....	13
10	Dimension.....	14



## INTRODUCTION

“ The 6A series is an intuitive programmable thermostat used to control electrical floor heating system or water heating system. It will keep home at comfortable temp whilst minimizing energy use. Install the app on your smart phone to control heating system remotely with the WiFi thermostat . ”

## TECHNICAL SPECIFICATIONS

**Supply voltage:** 85-265Vac 50/60Hz

**Standby power:** <1W/2W(WiFi version)

**Max load:** 16A(electric heating)/3A(water heating)

**IP class:** IP21

**Cable specification:**  $\leq 2.5\text{mm}^2$

## INSTALLATION

Step 1:



Press your fingers under the side of the front part and pull toward you.



Step 2:



Connect the thermostat according to the connection diagram.



Step 3:



Mount and reassemble the thermostat. Fasten the thermostat to a socket or an exterior wall box by driving the screws through the holes in each side of the thermostat.

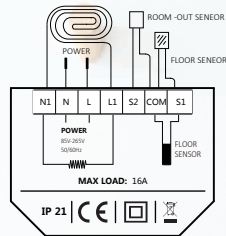
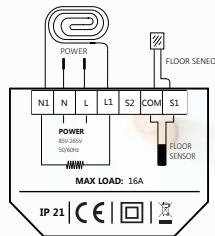


Step 4:



Put the frame on. Click the display module back in place.

## WIRING INSTRUCTION



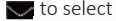


Please select floor sensor, Room-out sensor or floor sensor and Room-out sensor to run the thermostat if you install it on bathroom or wet location. Room-out sensor is used to detect the temp in the whole room. Room-out sensor sold separately.

**Suggestion:** Please keep the max load around 90% of 16A to prolong the lifetime.

## THERMOSTAT SYMBOLS

When the thermostat has been installed and connect to electricity, Please scroll down the On/Off switch to turn on the thermostat, and scroll it up to turn the thermostat off.

- Press the  to confirm the selection
- Press the  and  to select parameter.



## STARTUP WIZARD

Initial settings must be specified when the unit is activated for the first time. It will help you get a proper setting.

### Clock



\* If the thermostat is WiFi version, it will update time automatically after connecting to WiFi.

1

### Sensor selection

There are 5 options:



- 00 Floor sensor**: run by floor sensor(default).
- 01 Room-in sensor**: run by built-in room sensor.
- 02 Room-in sensor and floor sensor**: run by built-in sensor with floor temp limit.
- 03 Room-out sensor**: run by external room sensor.
- 04 Room-out sensor and floor sensor**: run by external room sensor with floor temp limit.

2

### Floor temp limit

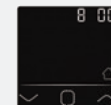
(If you choose Both sensors)



If you choose room sensor and floor sensor, floor temp limit must be set to protect floor.

3

### Home or office



Home

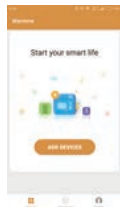


Office

4



**Step 2:** Click the APP, log in through the registered phone number or email address.



**Step 3:** click "Add Device" on the bottom of the screen.

**Step 4:** Check the thermostat WiFi flag is fast flashing. if not, operate the thermostat according to the APP tips until it flashes quickly. Click the "Make sure WiFi is flashing quickly" button .



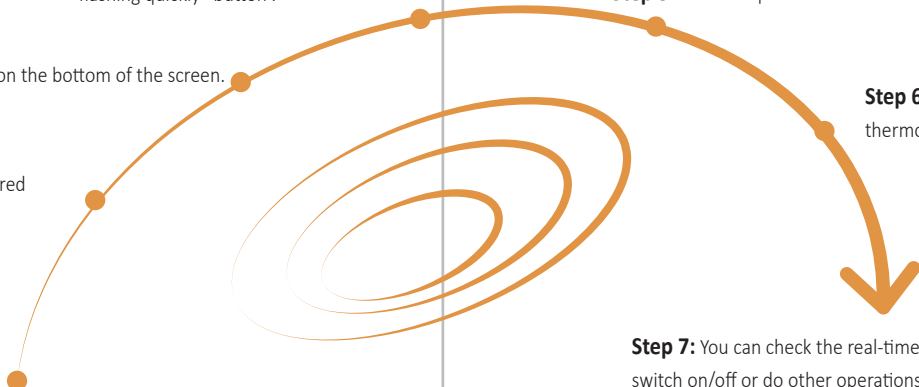
**Step 5:** Fill in the phone with the WiFi network password, click "confirm".



**Step 6:** Click "Done" after the APP is connected to the thermostat successfully, then finished the distribution.



**Step 7:** You can check the real-time temperature, adjust or set the temperature, switch on/off or do other operations on the main interface.



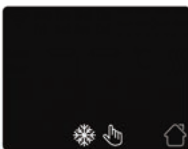
## FUNCTION AND OPERATION

### 8.1 Temporary Override Temperature



On the actual temp interface, Press the and to set temporary override temp. The temp is only valid at the current event and it will not be saved.

### 8.2 Mode



On the actual temp interface, Press the to select the mode.

**There are 3 modes:**

**Auto mode:** It is the default mode. Thermostat runs according to event parameters set in Event Setting to save energy. It will show home if you choose it otherwise office.

**Manual mode:** Thermostat will run with the set temp.

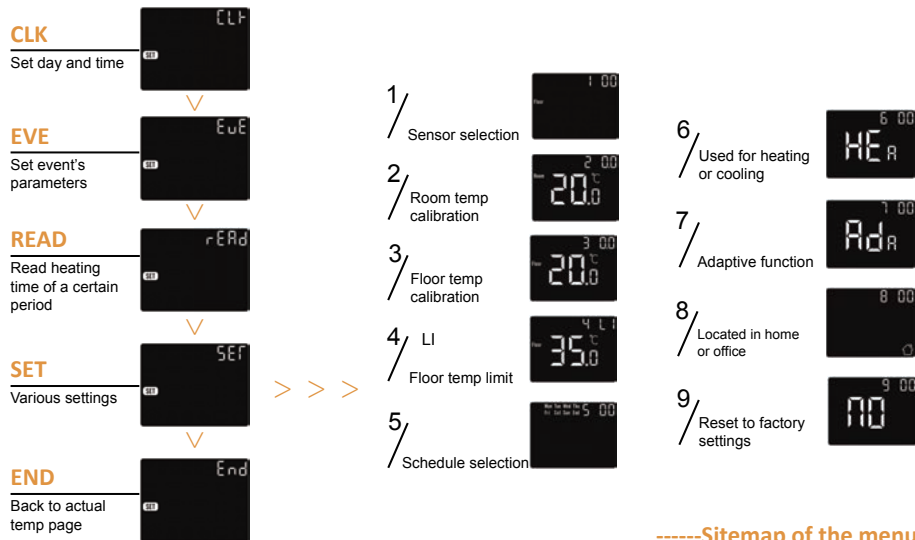
**Anti-frozen mode:** Thermostat will run with the low setting temp for ever. The maximum is 15°C.

### 8.3 Key-Lock

Lock all keys to prevent the settings from being changed. On the actual temp interface, press and hold the and for 3 seconds at the same time to lock or unlock all of the keys.

## 8.4 Menu

On the actual temp interface, press and hold the for 3 seconds to enter menu.



-----Sitemap of the menu

### 8.4.1 Clock

The default interface of the menu is CLK. Day and clock is set here.

Press the to enter day setting.

Press the or to set day.

Press the to enter hour setting.

Press the or to set hour.

Press the to enter minute setting.

Press the or to set minute.

Press the to back to the actual temp interface.

\* If the thermostat is WiFi version, it will update time automatically after connecting to WiFi.

### 8.4.2 Event Setting

Event setting can set and change the parameters. In Auto mode, the thermostat runs according to the parameters of the events. On the clock interface, Press the or to select EVE.

Press the to enter day selection of event setting.

Press the or to select a day or end.

Press the to enter the event selection of the day, or back to the actual temp interface if you select end.

Press the or to select an event.

Press the to select event's start time.

Press the or to set the Hour of starting time.

Press the to enter the Minute setting.

Press the or to set the Minute of starting time.

Press the to enter the temp setting.

Press the or to set the temp.

Press the to back to the event selection, or back to day selection if the event is last one.

\* If you want to back to the actual temp interface, you should back to the day selection and select end.

### Default parameters

	Day	(Wake)	(Leave)	(Back)	(Sleep)
Home	Mon-Fri	06:00 20.0 °C	08:30 15.0 °C	17:00 20.0 °C	23:00 15.0 °C
	Sat/Sun	06:00 20.0 °C	08:30 20.0 °C	17:00 20.0 °C	23:00 15.0 °C
	Day	(Work)	(Off work)		
Office	Mon-Fri	07:00 20.0 °C	18:00 15.0 °C		
	Sat/Sun	07:00 15.0 °C	18:00 15.0 °C		

### 8.4.3 Readout

Count the heating time (in percent) within a certain period.

On the clock interface, press the or to select READ.

Press the to enter Readout, the interface will show the heating time of the previous day.

Press the or to select 1 day, 30 days, 365 days, it will show the heating time within the certain period.

Press the to back to the actual temp interface.

### 8.4.4 Advanced Setting

The thermostat provides advanced settings to suit various special situations. These are normally set by technicians during initial installation.

On the clock interface, press the or to select SET.

Press the to enter advanced setting.

Each setting can be accessed by pressing and parameters adjusted by pressing or .

# Parameter

No.	Name	Default	Ranges
1	Sensor selection	00: Floor sensor	00: Floor sensor 01: Room-in sensor 02: 01+00 03: Room-out sensor 04: 03+00
2	Room temp calibration	0.0°C	-5.0°C -- 5.0°C
3	Floor temp calibration	0.0°C	-5.0°C -- 5.0°C
4	Floor temp limit	35.0°C	20.0°C -- 50.0°C
5	Schedule	00: 7	00: 7 01: 5+1+1
6	Used for	00: Heating	00: Heating 01: Cooling
7	Adaptive function	00: Adaptive	00: Adaptive 01: No
8	Located in	00: Home	00: Home 01: Office
9	Reset	00: No	00: No 01: Reset

## 1. Sensor selection:

There are 5 options:

- 00 Floor sensor: run by floor sensor(default).
- 01 Room-in sensor: run by built-in room sensor.
- 02 Room-in sensor and floor sensor: run by built-in sensor with floor temp limit.
- 03 Room-out sensor: run by external room sensor.
- 04 Room-out sensor and floor sensor: run by external room sensor with floor temp limit.

## 2. Room temp calibration: calibrate the temp detected by room sensor.

## 3. Floor temp calibration: calibrate the temp detected by floor sensor.

## 4. Floor temp limit: if you choose both sensors, floor temp limit must be set to protect floor.

## 5. Schedule: Select a weekly schedule for the event.

There are 2 options:

- 7: each day from Mon to Sun can be set individually.
- 5+1+1: 5 days from Mon to Fri have the same events, Sat and Sun can be set individually.

## 6. Used for: heating or cooling.

## 7. Adaptive function: after several days of installation and use, Adaptive function ensures that the required temp has already been reached when the next event begins.

## 8. Located in: Home or Office.

## 9. Reset: all parameters are restored to default values.

## 8.5 Open window detection

This function only works when room sensor or both sensor is selected (refer to 6.2). The thermostat with this function will shut off automatically for 15 mins when the window opens, as it can detect that the room temp plummets.



## TROUBLESHOOTING

- E1:** Room-in sensor error.
- E2:** Floor sensor error.
- E4:** Room-out sensor error.

## DIMENSION(MM)

